

Tour Fit System

Adjusting the M1 driver is simple by way of a 3 step system created to allow golfers to optimize launch conditions. Follow these steps to ensure you are achieving high launch and low spin to complement your ideal shot shape. The new adjustable back weight in the M1 adds the ability to adjust spin, launch and playability to ensure all golfers can maximize their distance.

1. Loft, Lie & Face Angle - Loft Sleeve

The 4° Loft Sleeve allows you to adjust the loft, lie and face angle of the M1 driver:

- Each of the 12 sleeve movements increases or decreases loft **0.50 - 0.75°**
- Each of the 12 Sleeve movements increases or decreases lie angle **0.50 - 0.75°**
- Each of the 12 Sleeve movements increases or decreases face angle **1.0 - 2.0°**

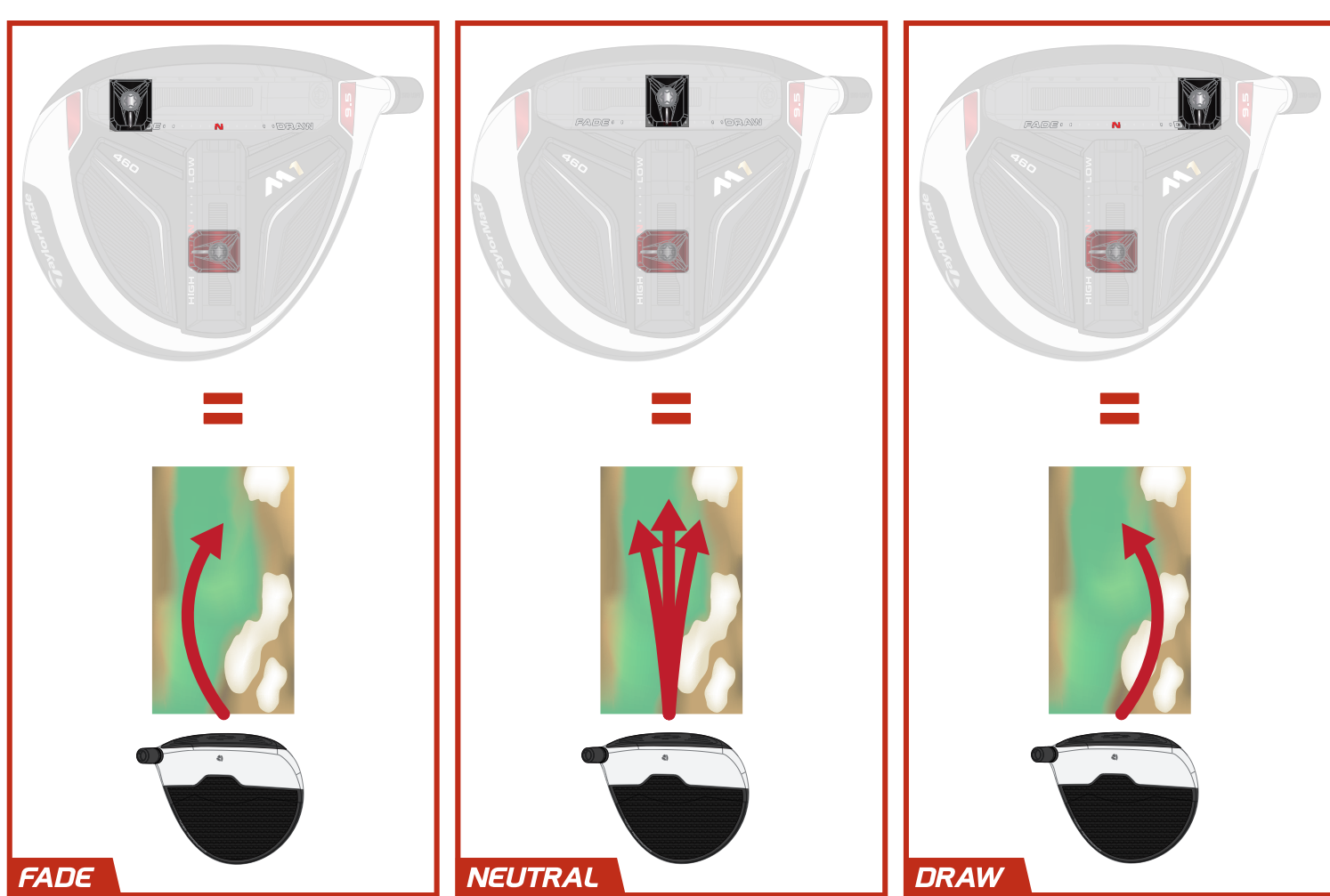


SETTING	8.5	9.5	10.5	12.0	Lie Angle	Spin	Face Angle
	8.5	9.5	10.5	12.0	56.0	±0	Square
	7.75	8.75	9.75	11.25	56.5	-300	2° Open
	7.0	8.0	9.0	10.5	57.25	-500	3° Open
	6.5	7.5	8.5	10.0	58.0	-600	4° Open
	7.0	8.0	9.0	10.5	58.5	-500	3° Open
	7.75	8.75	9.75	11.25	59.25	-300	2° Open
	8.5	9.5	10.5	12.0	60.0	±0	Square
	9.25	10.25	11.25	12.75	59.25	+300	2° Closed
	10.0	11.0	12.0	13.5	58.5	+500	3° Closed
	10.5	11.5	12.5	14.0	58.0	+600	4° Closed
	10.0	11.0	12.0	13.5	57.25	+500	3° Closed
	9.25	10.25	11.25	12.75	56.5	+300	2° Closed

2. Ball Flight - Front Track Weight System

The Front Track consists of one 15-gram weight to provide a range of draw, neutral and fade ball flights:

- **Fade** – Position weight toward the toe
- **Neutral** – Position weight in the center of the track
- **Draw** – Position weight toward the heel

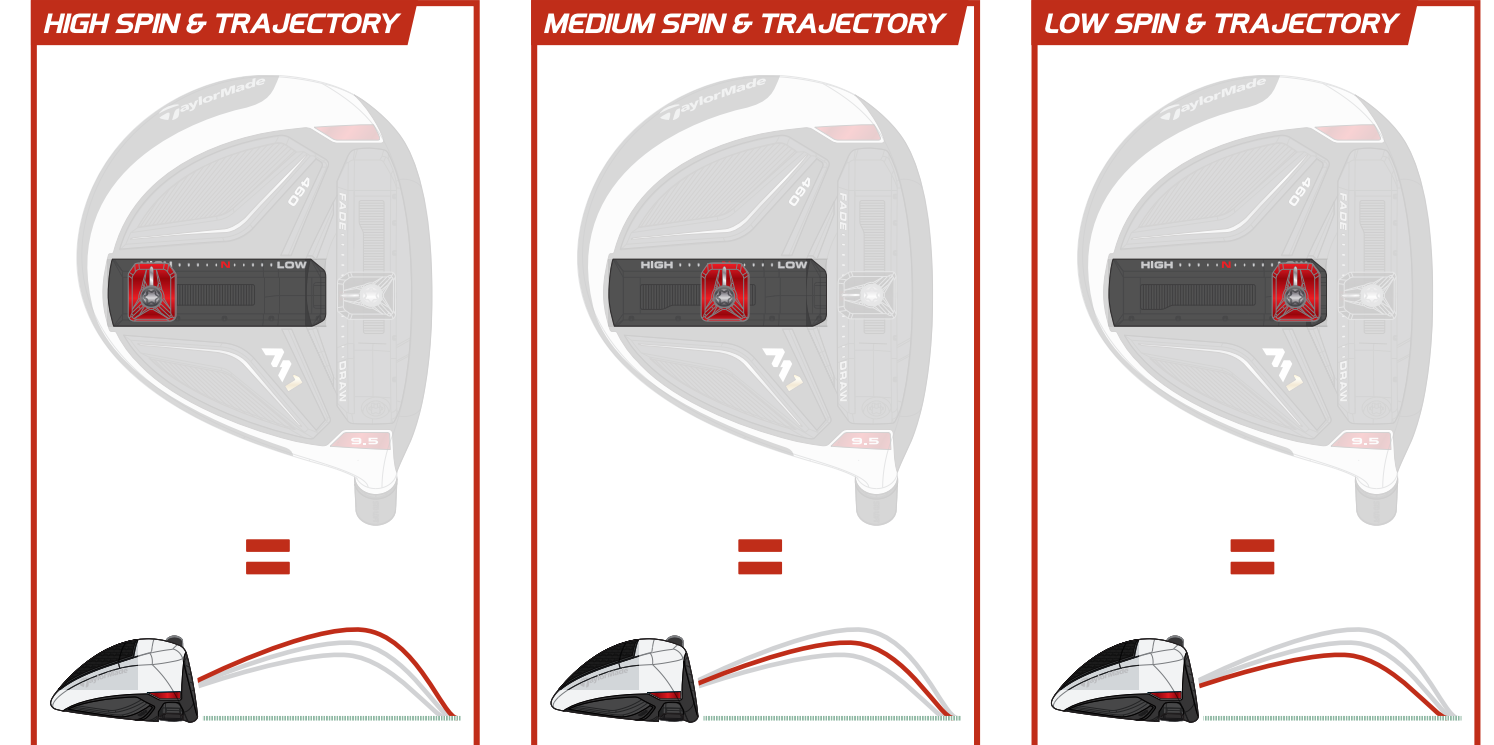


3. Spin & Trajectory Control - Back Track Weight System

The Back Track system has one 10-gram weight, which adjusts for range of high, medium and low spin & trajectory:

- **High Spin / More Trajectory / Maximum Forgiveness** – Move back weight towards the back "HIGH" setting
- **Medium Spin / Mid Trajectory** – Move back weight to the center setting to provide medium spin & trajectory
- **Low Spin / Less Trajectory** – Move back weight towards the front "LOW" setting to decrease spin & trajectory

Setting	Spin (rpm)
HIGH	+150
MEDIUM	±0
LOW	-150



M1 Fairway

The M1 fairway utilizes the same Loft Sleeve and Front Track System technologies found in the M1 driver to create a precise fit for ideal launch characteristics.

Loft, Lie & Face Angle - Loft Sleeve

The 4° Loft Sleeve allows you to adjust the loft, lie and face angle of the M1 fairway:

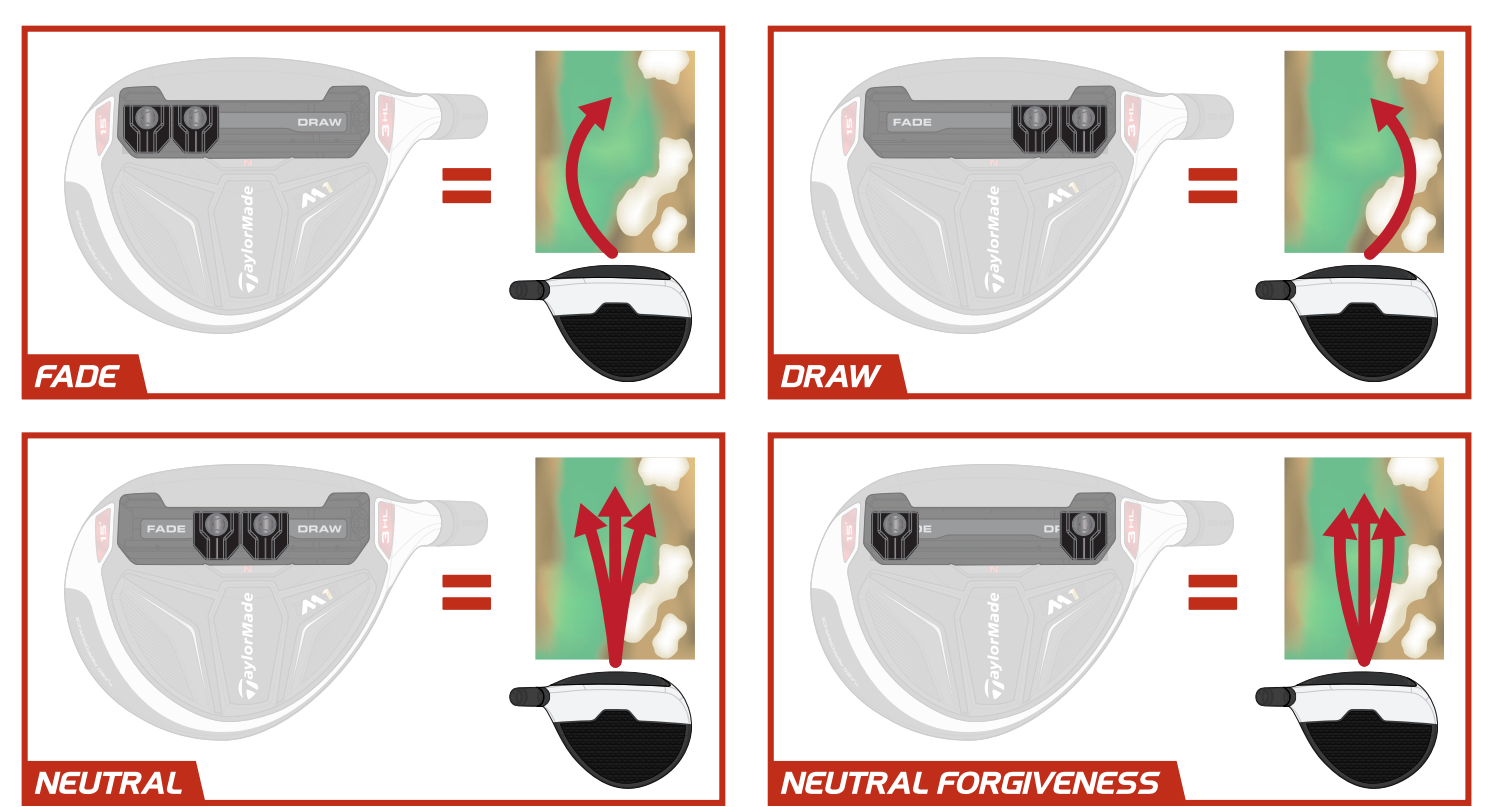
- Each of the 12 sleeve movements increases or decreases loft **0.50 - 0.75°**
- Each of the 12 Sleeve movements increases or decreases lie angle **0.50 - 0.75°**
- Each of the 12 Sleeve movements increases or decreases face angle **1.0 - 2.0°**



Ball Flight - Front Track Weight System

The Front Track consists of two 15-gram weights to provide a range of draw, neutral and fade ball flights:

- **Fade** – Position both weights toward the toe
- **Draw** – Position both weights toward the heel
- **Neutral** – Position both weights adjacent to each other in the center of the track
- **Neutral Forgiveness** – Position the weights split to increase stability



M1 Rescue

The M1 Rescue utilizes the Loft Sleeve to adjust loft and lie angles, while two removable weights allow for settings of a neutral or fade-biased ball flight.

Loft, Lie & Face Angle - Loft Sleeve

The 3° Loft Sleeve allows you to adjust the loft, lie and face angle of the M1 rescue:

- Each of the 12 sleeve movements increases or decreases loft by **0.50°**
- Each of the 12 Sleeve movements increases or decreases lie angle by **0.50°**
- Each of the 12 Sleeve movements increases or decreases face angle **1.0**



Ball Flight - Moveable Weight System

The M1 Rescue features one 25-gram weight and one 3-gram weight to provide a neutral or fade bias ball flight:

- **Fade** – Position the 25-gram weight in the toe port
- **Neutral** – Position the 25-gram weight in the center port



Adjusting the M1

Adjusting the M1 family is simple with the TaylorMade torque wrench. Use the wrench to loosen the screw in the center of each weight, then sliding the weight to the desired location and locking it in place by tightening the screw until you hear an audible "click" noise from the wrench.



In order to adjust the Loft Sleeve, loosen the screw in the heel until the clubhead releases from the shaft. Align the desired loft as marked on the sleeve with the line on the back of the hosel and tighten the screw until you hear an audible "click" noise.

Warning: Failure to adjust the club as instructed may result in injury or damage to property.